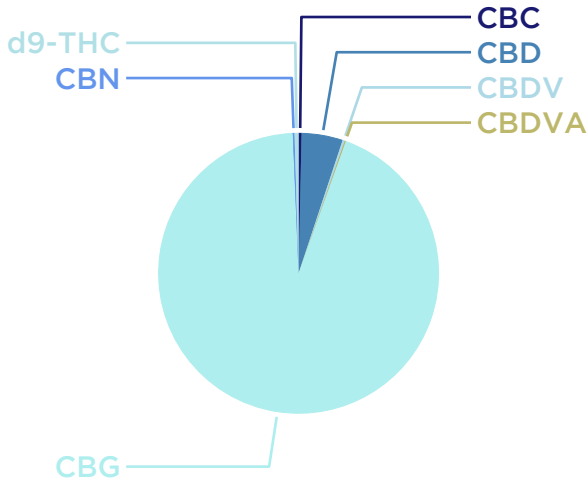


CERTIFICATE OF ANALYSIS

Hemp
 Product Hemp
 Sample date: 11/3/2020
 Received date: 11/3/2020
 Lab Number: PAC6305

Report prepared for
 Green County Hemp - Joe Mandt
 2935 S Fish Hatchery Road
 Fitchburg, WI 53711

Grower License # 477394
 Processor License #



Cannabinoid	Result % DM Basis	Percent of total	LOD ¹	LOQ ²
CBC	0.028	0.3	.0150	.0501
CBD	0.381	4.8	.0125	.0418
CBG	7.535	94.1	.0068	.0227
CBN	0.016	0.2	.0084	.0278
CBDA			.0043	.0143
CBGA			.0045	.0151
CBDV	0.021	0.3	.0061	.0203
CBDVA	0.010	0.1	.0041	.0136
d9-THC	0.037	0.5	.0154	.0514
d9-THCA			.0066	.0219
d8-THC			.0299	.0995
THCV			.0203	.0676
Total	8.007			

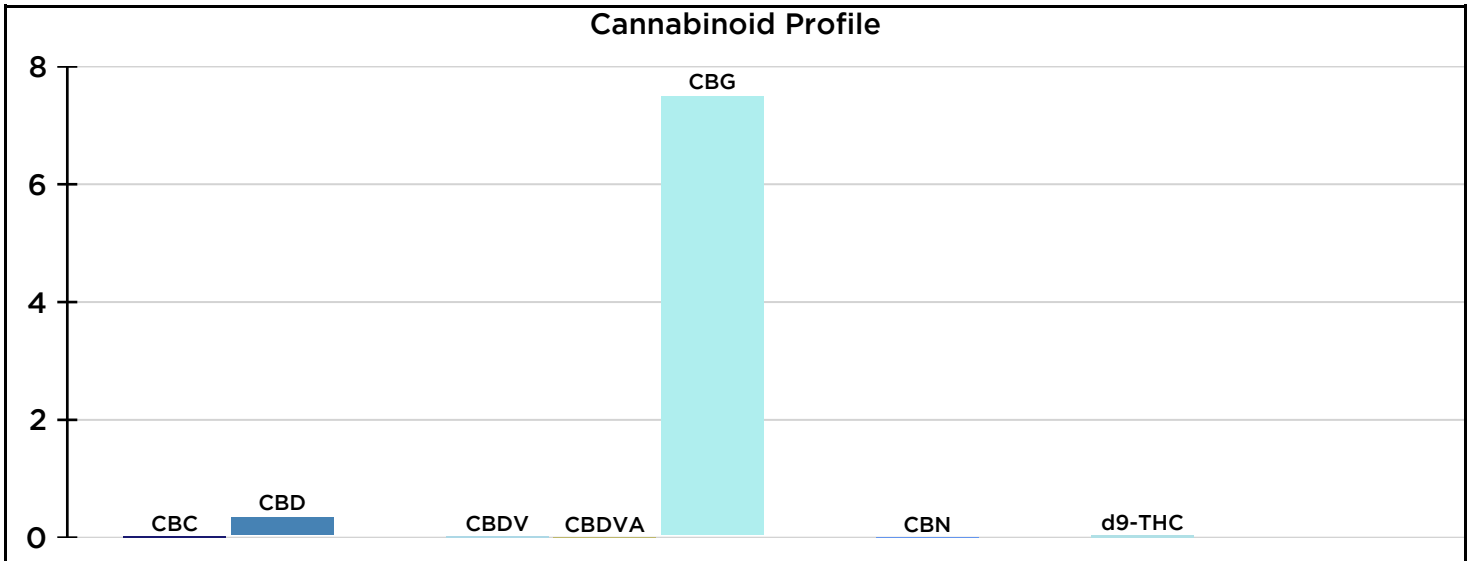
Moisture %
 NA

Total THC
 0.0368%

Total CBD
 0.38%

CBD:THC Ratio
 10.3

Total CBG
 7.53%



Analyzed by HPLC-PDA (Modified AOAC 2018.11)



PO Box 169
 Watertown, WI 53094
 License: 478792-HP

Dustin Sawyer, Director

Total THC=d9-THC+(0.877*d9-THCA)
 Total CBD=CBD+(0.877*CBDA)
 Total CBG=CBG+(0.878*CBGA)

Not valid for Wisconsin DATCP
 Certificate of Commerce

¹LOD Limit of detection
²LOQ Limit of quantitation